



*The NSW Government is working to deliver the new Tamworth Mental Health Unit as part of the \$700 million Statewide Mental Health Infrastructure Program. The new facility will provide the local community with contemporary mental health services, including a direct connection to Tamworth Hospital.*

## Vital link bridge construction coming soon

Work on constructing the new facility is progressing well.

The next important milestone involves constructing the bridge that will connect the new facility with the Acute Services Building (ASB). This is expected to be completed in early 2025.

The link bridge will join the inpatient floor of the new facility with Level 2 of the ASB. It will be constructed in three sections off-site so it can be installed in a reduced amount of time, minimising disruption to patients, visitors and staff.

Work will be occurring near the public entry to the Emergency Department, requiring temporary changes in how ED is accessed.

Construction will require breaking through the exterior wall leading to the corridor on Level 2 of the ASB. The project team is working closely with staff to ensure any noise, dust or vibration has no impact on the hospital's daily running.

Staff and visitors will be given advanced warning as disruptions are scheduled to occur.



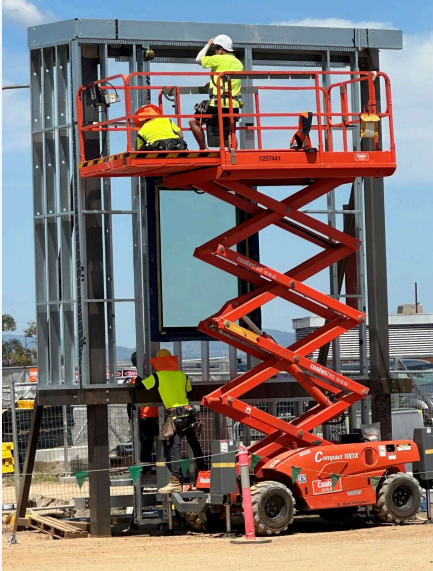


## Local artists have sneak peek at new facility

The three local artists chosen to work on producing artworks for the new facility had their first chance to tour the construction site recently as part of a Connecting with Country session.

The artists are (from left) Tess Reading, who will be producing large-scale graphic artwork for the walls and glazing; Audrey Trindall, who is consulting with Aboriginal staff and community to incorporate language and cultural interpretation in wayfinding signage; and Amy Hammond, whose sculptural work is set to transform the main entry atrium. All three said they were impressed by the scale of the project and how far advanced it is.

Next step in the arts strategy is partnering with Arts North West to find more local artists to produce artworks for the consumer bedrooms and meeting rooms.



## What's this all about?

You may have noticed this unusual structure appear at the construction site compound and wondered what it was all about.

It's a prototype of the facade that replicates the design of the new facility. The prototype gives the builder and LHD an opportunity to test the final design and installation methodology before the final product is installed.

This will give a greater certainty of the finished product and ensure a quality outcome for the LHD.

Mystery solved!

**For more information about the project, email [HI-banksia@health.nsw.gov.au](mailto:HI-banksia@health.nsw.gov.au) or visit: [hneinfra.health.nsw.gov.au/projects/tamworth-mental-health-unit](https://hneinfra.health.nsw.gov.au/projects/tamworth-mental-health-unit)**