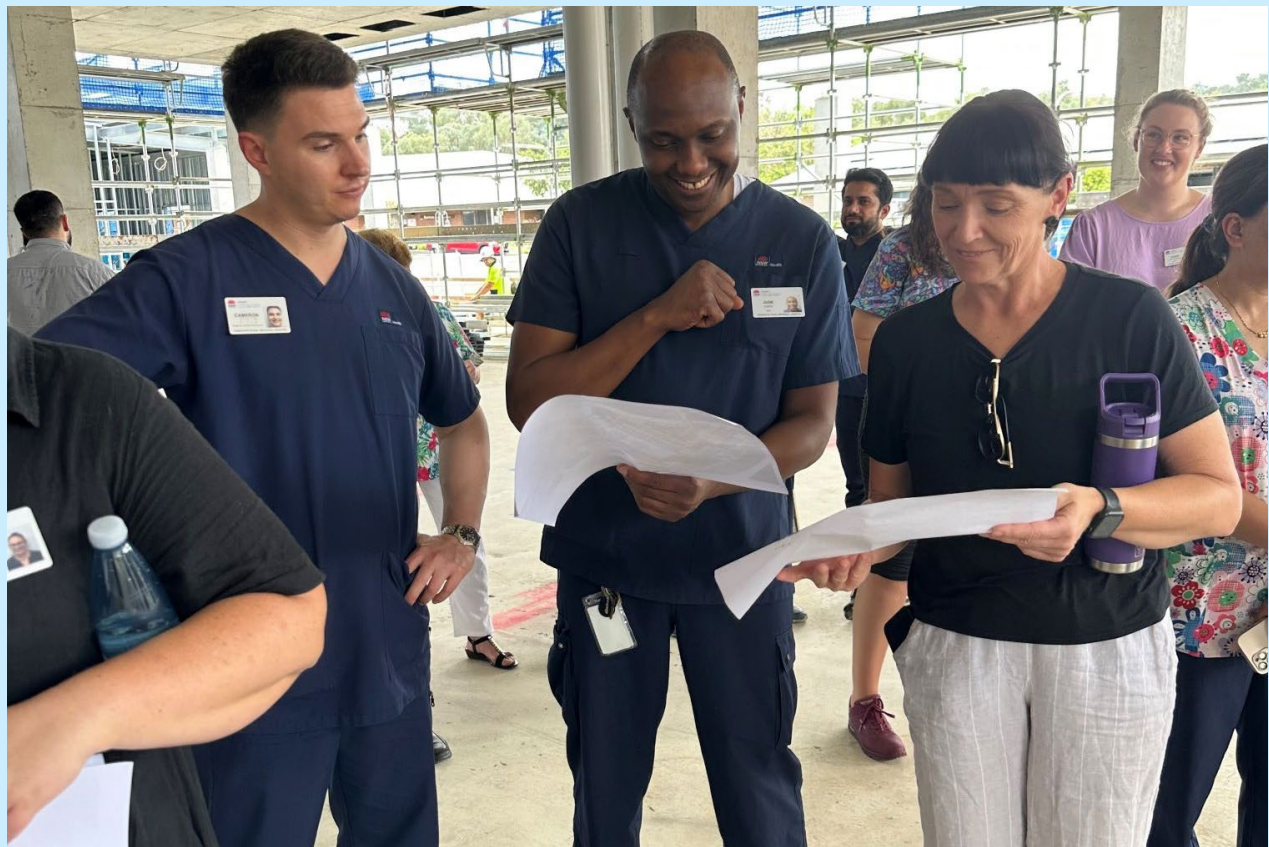




*The NSW Government is working to deliver the new Tamworth Mental Health Unit as part of the \$700 million Statewide Mental Health Infrastructure Program. The new facility will provide the local community with contemporary mental health services, including a direct connection to Tamworth Hospital.*



**Staff have first close-up look at new unit**

Mental Health Services staff recently had their first opportunity to tour the new mental health unit.

With work on the external structure coming to an end, it was a good opportunity for staff to walk around the site before work begins on the internal finishes.

The event included a barbecue lunch alongside the Hansen Yuncken workers who have been constructing the facility.

Construction is due to be complete by late this year.

## Seeking local artists



*An example of artwork installed in a patient bedroom in the new Blacktown Mental Health Recovery Centre, Western Sydney LHD.*

We are seeking interest from local artists with strong connections to Tamworth to provide artworks that will inspire and comfort patients, visitors and staff in clinical spaces of the new mental health unit.

The artworks will feature in interview and meeting rooms, and reproduced as wall graphics in patient bedrooms.

The EOI started on Friday 17 January and closes 5pm on Friday 14 February. Use our [online entry form](#) to express your interest.

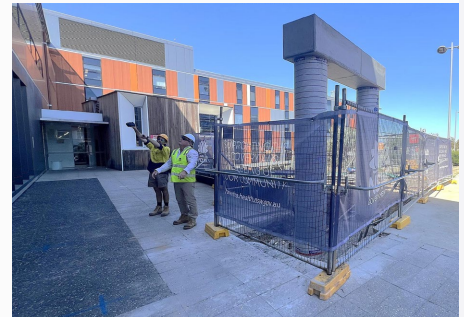
The EOI is running in partnership with Arts North West. For more information, email [HI-Arts@health.nsw.gov.au](mailto:HI-Arts@health.nsw.gov.au).

## Work started on link bridge

Work has started on the link bridge that will provide the clinical connection between the new mental health unit and Level 2 of the Acute Services Building.

Pictured here are the two columns that have been installed to support the link bridge.

The link bridge will be constructed in three sections off-site so it can be installed in a reduced amount of time, minimising disruption to patients, visitors and staff. Details on timing of this work will circulate shortly.



**For more information about the project, email [HI-banksia@health.nsw.gov.au](mailto:HI-banksia@health.nsw.gov.au) or visit: [hneinfra.health.nsw.gov.au/projects/tamworth-mental-health-unit](http://hneinfra.health.nsw.gov.au/projects/tamworth-mental-health-unit)**