



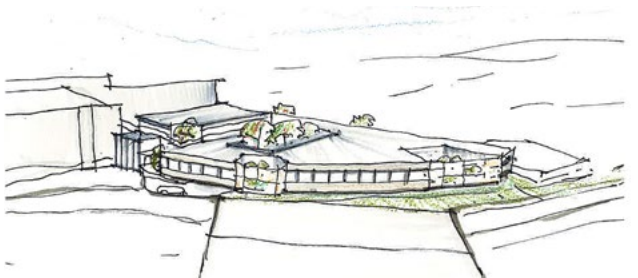
Project summary

The Banksia Unit is a priority project in the \$700 million Statewide Mental Health Infrastructure Program. Planning is underway to deliver a new mental health facility physically connected to Tamworth Hospital.

The new Banksia Unit will have 33 beds, containing additional beds for older people and short stay accommodation for adolescents and people experiencing vulnerability.



ARTIST IMPRESSION SOUTH WEST VIEW



ARTIST IMPRESSION NORTH EAST AERIAL VIEW

Consultation

Consultation on the project started in 2018, with the development of the Clinical Services Plan. To date, consultation has directly involved more than 850 staff, consumers, carers and community members.

To co-design the new Banksia Unit, the project team has been consulting with a large number of staff, carers and consumers with lived experience of mental illness. We also visited communities in the NSW New England North West, provided an online survey and as of August 2021 we had logged over 370 comments on the draft design for the new Banksia Unit.



TAMWORTH SHOPPING CENTRE POP-UP



TAMWORTH HOSPITAL POP-UP

During this consultation period, the project team has received a large number of suggestions and feedback related to the design of the new mental health facility. A summary of key feedback themes is included below.

In developing the design for the new Banksia Unit, the project team is guided by the Australasian Health Facility Guidelines which sets the parameters for the design of the mental health facility. Where possible we have adapted the design to accommodate the feedback received, noting that the feedback received has been significant, varied and in some instances conflicting. Feedback related to the new unit's operations has been logged for future discussion with the Local Health District.



We respect and value all feedback and will continue to work hard to achieve the best possible design outcome.

OVER
850
PEOPLE

CO-DESIGN
TEAM

REGIONAL
POP-UPS

ONLINE SURVEY

OVER
370

RECEIVED
ON THE
DESIGNS

HERE'S WHAT YOU TOLD US	HERE'S WHAT WE'RE DOING
<p>PARKING</p> <ul style="list-style-type: none"> • Parking is a challenge for everyone including staff • There needs to be dedicated parking for staff and visitors to the new unit • You also need designated parking near the building for ambulances and police 	<p>A detailed traffic and parking investigation for the new unit has occurred. Staff and visitor car parking will be provided in line with the traffic and parking consultation advice.</p>
<p>THE PHYSICAL BUILDING</p> <ul style="list-style-type: none"> • Consider First Nations people and incorporate indigenous elements like rivers in the exterior design • Find common ground between the need to de-stigmatize the building's look (from a mental health perspective) and not re-traumatize people further • Make it blend in with the existing hospital, while assisting with orientation for patients returning from leave • As a patient the building colours are the last thing I'll be thinking about 	<p>As part of the detailed design process, the project team will continue to review the exterior design and colours in light of the diverse feedback received to reach a common ground.</p>



HERE'S WHAT YOU TOLD US

HERE'S WHAT WE'RE DOING

THE OUTDOOR SPACES

- In the survey you told us that the outdoor areas are the most important calming space within the unit and the most important amenity for visiting family and friends.
- Overwhelmingly you said the courtyards should be a space for multiple purposes from exercise, to relaxation, art and space for activities. This included:
 - open space for activities
 - a walking track for exercise
 - space to kick a ball
 - trees for shade in summer
 - space for sunshine in winter
 - tables with seating to encourage conversations
 - a mix of artificial turf and real grass
 - single seats/ benches with armrests and backrests in the Older Persons courtyard
 - sensory equipment and play space in the Adolescent/ Vulnerable courtyard
- Safety is a major concern – inside walls and trees shouldn't be able to be climbed, plants can't be toxic
- You said natural ventilation and allowing fresh air into the building was important.

The outdoor spaces feature prominently in the design for the new unit with seven courtyards, as well as three atriums and numerous garden spaces to bring the outside in and create a sense of nature.

We have received a lot of diverse feedback on the outdoor spaces design. Many elements have already been incorporated and an additional courtyard off the waiting area for families and visitors has been included in the design in response to feedback.

We will continue to work with consumers, carers, staff and the landscape architect during the next phase of the design process to ensure the design provides a safe, therapeutic environment for healing, an opportunity to engage in activity and an appropriate space to meet with friends and family.

THE INTERNAL SPACES

- In the survey you said that warm neutral colours (yellow, orange, pink, clay, cream) was the most preferred internal colour palette.
- You also said that natural lighting was highly important within all areas of the unit.
- The location of the De-escalation and Seclusion space is important. It needs to be as close as possible to the:
 - building entry,
 - staff station,
 - and security.
- It also needs windows for staff visibility, lighting controlled by staff and a two-way speaker.
- Similarly for the Interview rooms you said the size, location and layout are crucial to usability. This includes:
 - a consensus on the location for the rooms so they are positioned in the most appropriate spaces across the unit
 - the rooms should be adaptable - sometimes the ward is quiet, and patients can interact more; other time the case mix is more acute and the need to lock off areas is required
 - having staff visibility is important but privacy is still important
 - having multiple purposes would be beneficial
 - some or all interview rooms being technology enabled

During the schematic design phase we were able to incorporate a number of the suggestions relating to the Interview rooms, including location and provision of technology.

We have listened to the feedback about the floorplan and moved the Older Persons Pod further away from the main entry to a quieter location.

Other items we have incorporated into the design includes sensory rooms and beverage bays in the dining/lounge areas.

During the next phase of design we will continue to work with consumers, carers and staff to design rooms that are multi-use, so when not in use clinically they can be used for other activities such as for meditation, reflection and quiet.



What are the next steps for the project?

The project team will continue to develop the design for the new Banksia Unit. This includes the establishment of Working Groups to decide on furniture, fixtures and Arts in Health to name a few. We will also continue consulting on the outdoor spaces, the exterior façade and wayfinding signage.

Planning is expected to be completed in late 2021, construction is forecast to start in 2022 and the project is expected to be complete by 2024.

The project team is committed to delivering a modern and healing mental health facility for the New England North West communities.



ARTIST IMPRESSION SHOWING THE NEW UNIT WITH TAMWORTH HOSPITAL ON THE LEFT

More information?

For more information on the project please visit Health Infrastructure's website at:

<https://bit.ly/3wKIGnt>

The Banksia webpage includes previous newsletters, Frequently Asked Questions as well as some of the design images.

Or you can email the project team directly at:

HI-Banksia@health.nsw.gov.au