

Concept design for Manning Hospital Redevelopment focuses on connection and community

The concept design for Stage 2 of the \$100 million Manning Hospital redevelopment has been unveiled, showcasing a campus which supports the delivery of health services through better connections with patients, staff and community.



The redevelopment is designed around people, places and interaction. It delivers an environment which is more culturally respectful, provides connections to nature and natural light, and reflects the diversity of the community.

Stage 2 of the redevelopment of Manning Hospital includes:



A new 'clinical spine' through the site to improve flow and connectivity of services



Improved drop-off and front of house areas to provide a clear entry to the hospital



Upgraded inpatient beds to support contemporary models of care



An integrated back of house and upgrade of essential hospital infrastructure



Relocation and expansion of clinical support services, including pharmacy and pathology

The concept design builds on the master plan for Manning Base Hospital

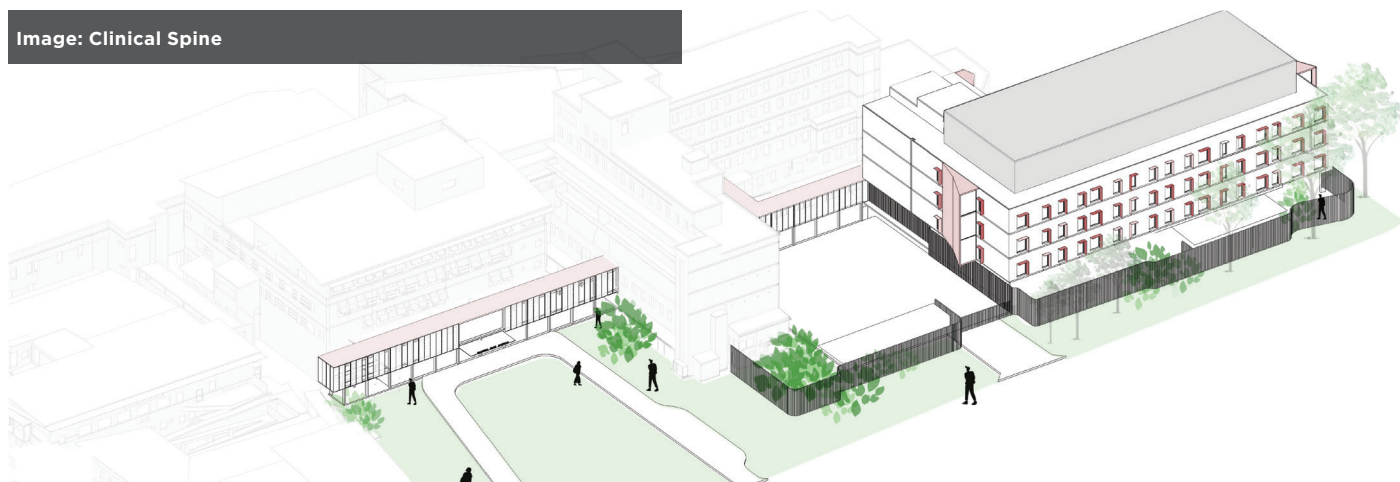
Unveiled in January 2022, the master plan guides the development of the site, including how key existing and future elements of the hospital best connect with each other.

The master plan provides a cohesive strategy for future development on the site – this means there will be capacity to enable new and upgraded clinical facilities to be integrated seamlessly.

The new two-storey clinical spine will improve flow and the connectivity of services

A key element of the redevelopment is a new two-storey clinical spine, which will link the hospital's buildings to provide high-quality patient care, improved flow and better connectivity of services.

Image: Clinical Spine



Separating public areas on level 1 from clinical / patient areas on level 2, the spine supports access and way finding around the hospital for community, improves core clinical relationships and ensures the comfort and dignity of patients.



Image: Concept design image for Manning Hospital Redevelopment - Stage 2. Artist's impression

4 ways to get involved in Manning Hospital Redevelopment – Stage 2

1. APPLY TO JOIN A PROJECT WORKING GROUP

Project Working Groups support consultation and provide opportunity for staff, stakeholders and community members to shape key aspects of the hospital redevelopment, including:

- Providing input and advice on cultural awareness.
- Contributing to the development of culturally respectful spaces.
- Sharing ideas and providing feedback on landscaping, signage and wayfinding plans.
- Participating in the Arts & Heritage strategy.

If you are interested in being part of the Project Working Group, contact the project team HI-manninghospitalredevelopment@health.nsw.gov.au for more information.

2. COMPLETE OUR COMMUNITY SURVEY AND HAVE YOUR SAY

Take a look at the latest plans and designs, complete the survey and let us know what you think. To access the survey:

- Scan the QR code to complete the community survey, or
- Follow the link surveymonkey.com/r/6F9CV9X



The survey is being run by the University of Newcastle and will run until Monday 8 August 2022.

3. ATTEND COMMUNITY PRESENTATIONS AND INFORMATION POP-UPS

From mid-July 2022 the project team will be out and about sharing information about the redevelopment, ready to answer your questions and take feedback on the plans and designs.

Visit the project website: hneinfra.health.nsw.gov.au/projects/manning for key dates and locations, or contact the project team HI-manninghospitalredevelopment@health.nsw.gov.au to find out more

4. KEEP IN TOUCH

HI-manninghospitalredevelopment@health.nsw.gov.au
hneinfra.health.nsw.gov.au/projects/manning